



Dianne Longley  
*Crossing Over*, carved Jelutong panel with pokerwork, oil paint, gold leaf, 30 x 42cms, 2007



Dianne Longley  
*Gesture*, carved Jelutong panel with pokerwork, oil paint, mastic varnish, gold leaf, 30 x 42cms, 2007



Dianne Longley  
*From Darkness*, carved Jelutong panel with pokerwork, oil paint, gold leaf, 30 x 42cms, 2007

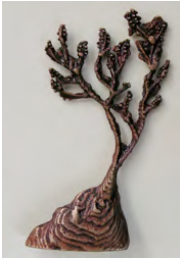


Dianne Longley  
*Tree Spirit*, carved Jelutong panel with pokerwork, oil paint, gold leaf, 30 x 42cms, 2007



Dianne Longley  
*Bridge*, carved Jelutong panel with pokerwork, oil paint, mica pigments, wax varnish, gold leaf, 30 x 42cms, 2007

Dianne Longley - List of Works (selected for website) - *Spirited Away*, Adelaide Central Gallery, SA - 2007



Dianne Longley  
*Withstanding*, Bronze, oil pigment,  
9 x 4.5 x 3cm, 2007



Dianne Longley  
*Strangeness*, Bronze, oil pigment,  
7 x 5.5 x 2.5cms, 2007



Dianne Longley  
*Joyful*, Pewter, oil pigments,  
7.5 x 5.5 x 2.5cms, 2007



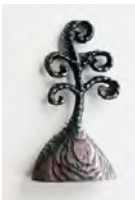
Dianne Longley  
*Traces of Wind*, Pewter, oil pigments,  
6.5 x 5 x 2cms, 2007



Dianne Longley  
*Inspiration*, Bronze, oil pigment,  
13.5 x 5.5 x 2cms, 2007



Dianne Longley  
*Wistful*, Pewter, oil pigments,  
9.5 x 7.5 x 2.5cms, 2007



Dianne Longley  
*Spirited Away*, Bronze, oil pigment,  
6 x 5 x 2.5cms, 2007



Dianne Longley  
*Withstand*, Bronze, oil pigments,  
12.5 x 5.5 x 2.5cms, 2007

Dianne Longley - List of Works (selected for website) - *Spirited Away*, Adelaide Central Gallery, SA - 2007



*Gift*, Pewter, oil pigments,  
9.5 x 6 x 2.5cms, 2007